



Plasticair Inc.

Specialists in Fan Engineering and Pollution Control Equipment

Mixed Flow Lab Fans

Model: SKYPLUME G1-ELMV-DMF & ELLV-DMF

AMCA 260 Tested

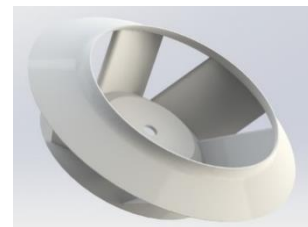
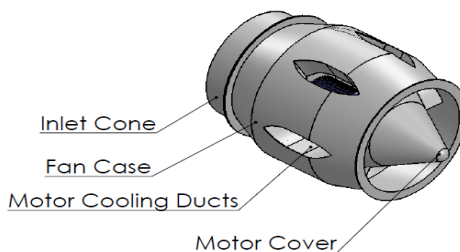
Application

This unit is commonly used in exhaust systems for universities, schools, hospitals, research facilities, laboratories, restaurants and waste water treatment plants. The SKYPLUME G1-EL Induced Flow Exhaust Fans are designed to decrease the likelihood of concentrated, contaminant-laden air from being redirected into the building's intake or makeup air, all of which is intended for use in exhausting laboratory fumes and hazardous chemicals.

Polluted air is diluted from the Induced flow exhaust fans at the outlet as well as increasing the outlet volume of the fan. The discharge air will impel, increasing plume height without a tall stack.

Benefits

- ✓ Far greater wind band volumes
- ✓ Patented design
- ✓ 233% - 266% Dilution Rates
- ✓ Volumes up to 61,100 cfm per fan
- ✓ Static Pressure up to 6" W.G.
- ✓ FRP Hand layup construction
- ✓ Gas stream only in contact with solid FRP surfaces
- ✓ Higher effective plume heights
- ✓ Quiet fan performance
- ✓ Superior corrosion resistance
- ✓ Dampers are aluminum epoxy coated. (FRP or 316 SS are available)
- ✓ 125 MPH wind load rating support wires
- ✓ All of our performance data is AMCA certified complete with the AMCA 260 seal
- ✓ Systems designed and meets ANSI Z9.5
- ✓ Motor located out of air stream
- ✓ FRP (Rust Proof) mixed flow wheel design
- ✓ FRP (Rust Proof) SKYPLUME stack
- ✓ All FRP 0-25 flame spread per ASTM-E84
- ✓ Direct Drive Arrangement # 4 – Direct couple.
- ✓ 35 year proven history



PATENT NUMBERS
Canada: 2365932 & 2456249
U.S.: 6676503 & 7241214



Plasticair Inc. certifies that the SKYPLUME-G1-ELMV - DMF and ELLV - DMF laboratory exhaust model shown herein are licenced to bear the AMCA seal. The ratings shown are based on tests and procedures performed in accordance with AMCA publication 211 and publication 311 and comply with the requirements of the AMCA certified ratings program. The AMCA certified ratings seal applies to induced flow fan air and sound performance (AMCA Standard 260).

Contact sales@plasticair.com for further details